

# The Seam Between Human and Machine.





**You got caught by your own code.**

The hard part looks weightless.  
The easy part looks heavy.



Production can be proxied.  
Navigation must be carried.



# The difference between a tool and a mask.

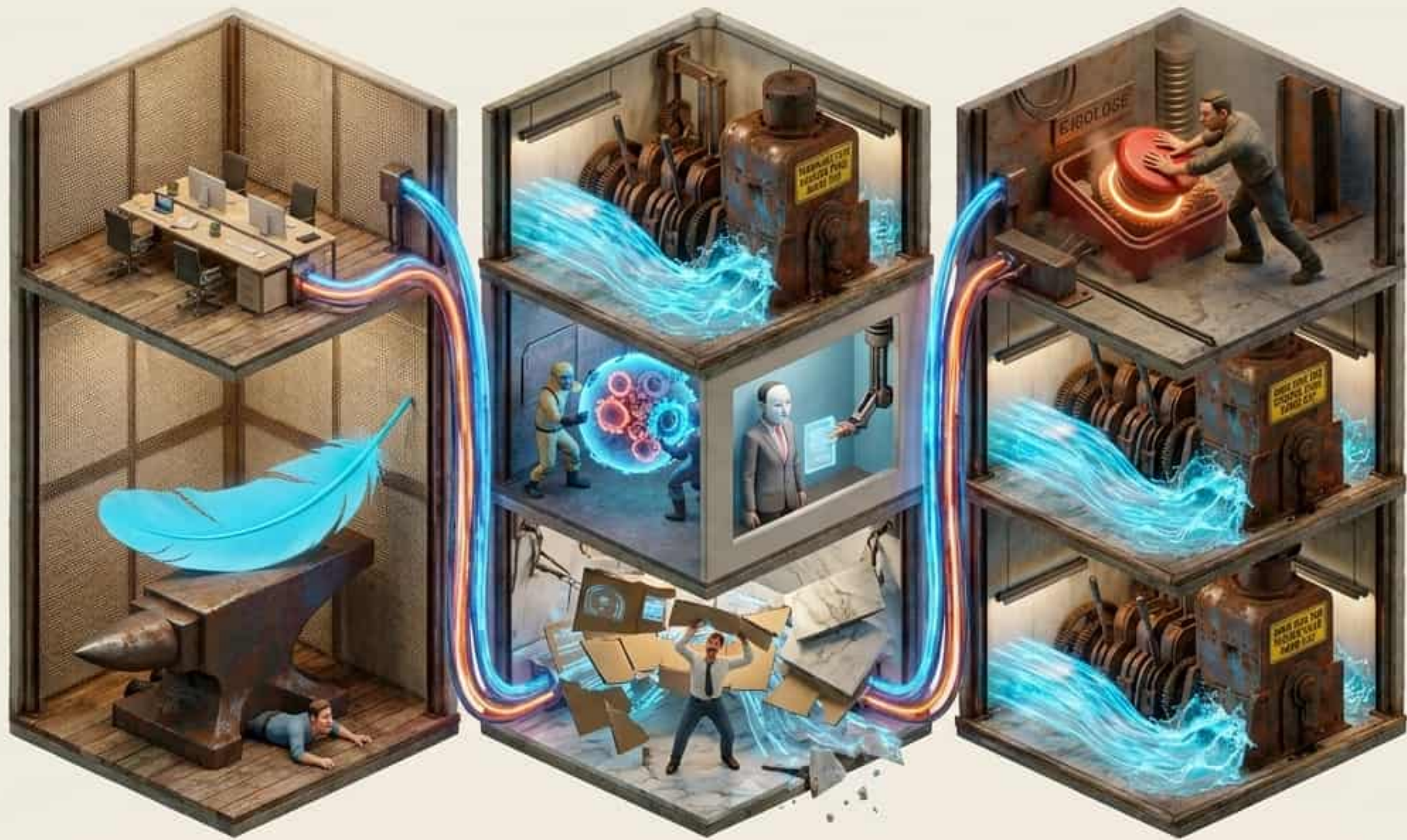




Conscience must live  
in the machinery.

Architecture asks the question.  
Only the person can mean the answer.





Detection is easy. Architecture is expensive.  
Inhabitation is a choice.